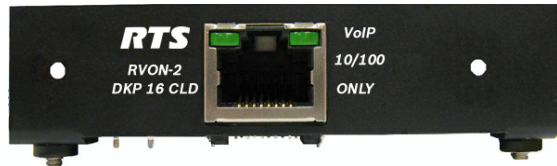


RVON-2 (90027877001) Quick Start Guide (DKP 16 CLD)



INCLUDED PARTS:

- DKP 16 CLD RVON-2 Option Card (90207877001)
- KP CLD Resource Disk
- 2 – Screw, 4-40 x 1/4 Pan Head, black

DKP 16 CLD RVON-2 Installation

To install the RVON-2 Option Card into the DKP 16 CLD, do the following:

1. Power **OFF** the DKP 16 CLD.
2. Remove (4) **pan head screws** from the bottom of the unit.

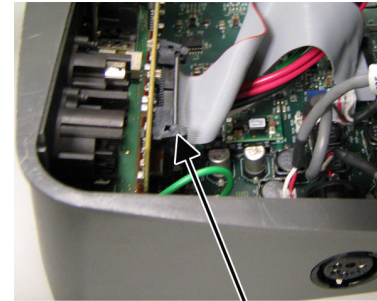


3. Carefully lift the **DKP top panel** off of the unit and set it aside.

Important: You will not be able to remove the entire top panel off because of the many other connectors within the unit.

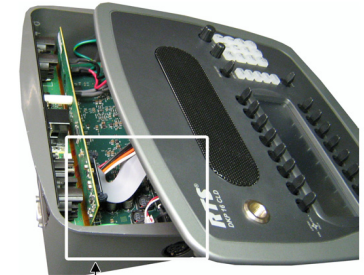
If a GPIO Option Card is installed, continue to the next step, otherwise, skip to step 7.

4. Disconnect the **ribbon cable connected at J6** on the GPIO option card and tuck it towards the front of the unit so it is out of the way.



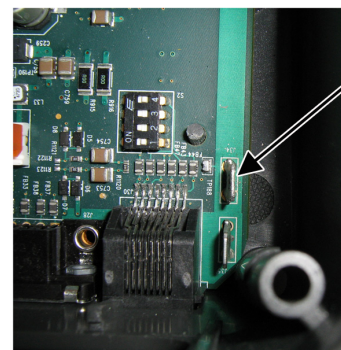
Ribbon Cable

Detail View A



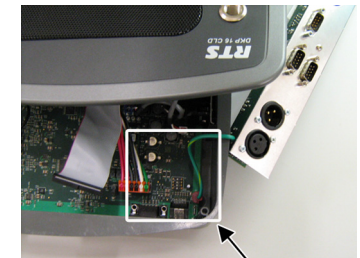
Detail View A

5. Gently, but firmly, lift **up and out** on the GPIO Option Card and set aside.
6. Carefully disconnect **J34** from the main board.



J34
Connector

Detail View B



Detail View B

RVON-2 (90007877001) Quick Start Guide (DKP 16 CLD)

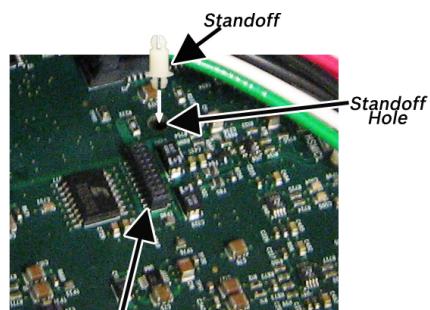
7. Using a screwdriver, remove the (2) mounting screws¹ from the DKP 16 CLD RVON-2 blank plate and remove the blank.

NOTE: Set these (2) screws aside for later use in attaching the RVON-2 Option Card.



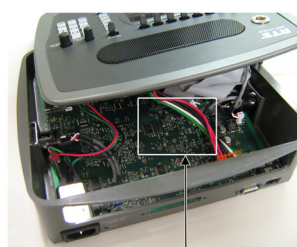
Mounting Screws

8. Remove the **standoff** from the RVON-2 Option card.
9. Attach the **standoff** to the main board of the DKP 16 CLD unit.



J18

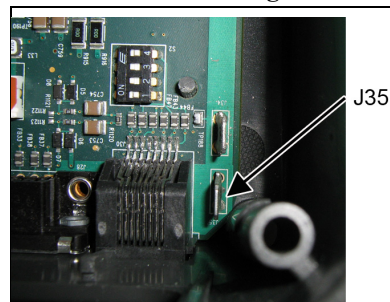
Detail View C



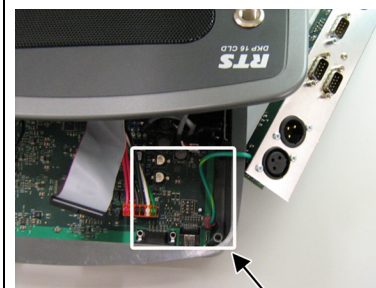
Detail View C

10. Carefully line up the **standoff hole** on the RVON-2 Option Card with the **standoff** on the DKP 16 CLD main board. By doing this, you ensure J10 and J18 are aligned to seat properly.

11. Gently press down on the **RVON-2 Option Card** with enough force to pop the option card in place.
12. Attach the **RVON-2 Option Card** to the DKP 16 CLD frame using the same mounting screws as removed in step 7.
13. Attach the **RVON-2 ground wire** to **J35** (shown in Detail D).



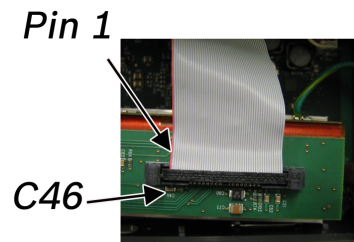
Detail View D



Detail View D

14. Reconnect the **GPIO Option Card** to **J34** (see step 6).
15. Place the **GPIO Option Card** in the DKP 16 CLD unit.

NOTE: Do NOT connect the ribbon cable backwards, unintended results may occur. Pin 1 (designated by the red wire) lines up with capacitor C46.



16. Replace the **ribbon cable** to **J6** of the GPIO Option Card (see step 4).
17. Replace the **top panel of the DKP 16 CLD unit** and secure it with (4) pan head screws.

NOTE: For operation instructions, see the KP CLD User Manual (part number 93507858000).

¹. 4-40 x 1/4 pan head.