

*Technical Data Package*  
*MODEL 862*  
*System Interconnect*



## **PROPRIETARY NOTICE**

The product information and design disclosed herein were originated by and are the property of Telex Communications, Inc. Telex reserves all patent, proprietary design, manufacturing, reproduction, use and sales rights thereto, and to any article disclosed therein, except to the extent rights are expressly granted to others.

## **COPYRIGHT NOTICE**

Copyright 2006 by Telex Communications, Inc. All rights reserved. Reproduction, in whole or in part, without prior written permission from Telex is prohibited.

## **WARRANTY NOTICE**

See the enclosed warranty card for further details.

## **CUSTOMER SUPPORT**

Technical questions should be directed to:

Customer Service Department  
RTS/Telex Communications, Inc.  
12000 Portland Avenue South  
Burnsville, MN 55337 USA  
Telephone: 800-392-3497  
Fax: 800-323-0498

## **RETURN SHIPPING INSTRUCTIONS**

Customer Service Department  
Telex Communications, Inc. (Lincoln, NE)  
Telephone: 402-467-5321  
Fax: 402-467-3279  
Factory Service: 800-553-5992

Please include a note in the box which supplies the company name, address, phone number, a person to contact regarding the repair, the type and quantity of equipment, a description of the problem and the serial number(s).

## **SHIPPING TO THE MANUFACTURER**

All shipments of product should be made via UPS Ground, prepaid (you may request from Factory Service a different shipment method). Any shipment upgrades will be paid by the customer. The equipment should be shipped in the original packing carton. If the original carton is not available, use any suitable container that is rigid and of adequate size. If a substitute container is used, the equipment should be wrapped in paper and surrounded with at least four (4) inches of excelsior or similar shock-absorbing material. All shipments must be sent to the following address and must include the Proof of Purchase for warranty repair. Upon completion of any repair the equipment will be returned via United Parcel Service or specified shipper, collect.

Factory Service Department  
Telex Communications, Inc.  
8601 East Cornhusker Hwy.  
Lincoln, NE 68507 U.S.A.  
Attn: Service

This package should include the following:

## TABLE OF CONTENTS

	<u>Page</u>
Unpacking Information .....	2
Table Of Contents .....	3
Warranty .....	4
Shipping Information .....	4

### SECTION 1: INTRODUCTION

1.1	Introduction & Description.....	5
1.2	Specifications....	6

### SECTION 2: PARTS LIST

2.1	Introduction .....	6
2.2	How To Obtain Parts.....	6
2.3	Shipping List, Model 862.....	6
2.4	Final Assembly, Model 862.....	7
2.5	Back panel Assembly .....	7
2.6	Printed Circuit Assembly, Model 862 (Upper) .....	8
2.7	Printed Circuit Assembly, Model 862 (Lower).....	8
2.8	Printed Circuit Assembly, Motherboard, Model 862.....	8
2.9	Front Panel, Model 862 .....	9

### SECTION 3: LIST OF DRAWINGS

Schematic Diagram, SA/IFB/PGM, Input Board (Upper) Model 862 .....	11
Schematic Diagram, SA/IFB Output Board (Lower), Model 862 .....	12
Assembly Diagram, P.C. Board, SA/IFB/PGM Inputs (Upper) Board - Model 862.....	13
Assembly Diagram, P.C. Board, SA/IFB Outputs (Lower) Board - Model 862.....	14
Schematic Diagram, Model 862, sheet 1 through 3 .....	15-17
Assembly Drawing, P.C.B. Board, System Interconnect, Model 862.....	18
Assembly Drawing, Top Assy, System Interconnect, Model 862.....	19

## SECTION 1: INTRODUCTION

The Model 862 System Interconnect interfaces with the Model 802 Master Stations and other external systems, and equipment. Typically, Model 802 Master Stations access communications circuits which include: conference-line and central matrix type intercom systems, paging systems, telephone lines and two-way radios. (see drawing AS3062).

The Model 862 System Interconnect enables the connection of up to twelve Model 802 type intercom channels; and up to twelve standard "TW" intercom system channels. The Model 802 Master Stations plug into the Model 862 System Interconnect at J1 - J4 inclusive. The Model 862 converts the twelve Master Station type channels (two-wire, balanced, dry) to twelve "TW" type channels (two-wire, unbalanced, 'wet' = with dc) by using transformer and capacitive coupling. The "TW" circuits are accessed on rear panel mounted 4-pin XLR type connectors: J5 (channels 1, 2, 3), J6 (channels 4, 5, 6), J7 (channels 7, 8, 9) and J8 (channels 10, 11, 12). These circuits are directly plug-in compatible with standard "TW" intercom lines. The "TW" System power supply (ies) terminate the Master Station type channels. If a Master Station type channel does not interface to a "TW" system power supply, a proper termination must be added. This termination consists of a 200 ohm resistor and a 10 microfarad capacitor connected in series. The resistor-capacitor combination is connected on the unbalanced connector from the channel pin (to be terminated) to the common pin.

Associated with each Master Station channel is a "keying" logic type signal which operates a relay in the Model 862 System Interconnect. There are twelve such logic signals and they are originated by pressing a Model 802 "Talk" button. Each of the twelve relays has a set of single pole double throw contacts available on one of two rear panel mounted 25-pin "D" type connectors (J21, J22). The relay contacts may be used for control, signalling, or audio switching functions.

The relays for channels 7 through 12 have an additional set of audio contacts which are accessed on six female XLR-3 type input connectors (J9 - J14

inclusive). These circuits are line-level transformer-balanced and can be used for simple Studio Announce, Slate Microphone, IFB (Interrupted FeedBack or program interrupt), and/or similar functions. (These functions will be common to all Model 802 Master Stations in the system when they are equipped with the "Talk Option"). A transformer balanced, program input (J23, AUX PGM IN #2) on the Model 862 accepts a line level audio signal. This common program monitoring signal is disrupted to the "Auxiliary Program Input #2" on all the Model 802 Master Station in the system.

### Additional Details

If more than four Model 802 Master Stations LINE CONNECTORS are to be connected to the Model 862 System Interconnect, use (a) Model 4025A 1 x 4 Splitter Assembly (s) to parallel the additional incoming cables from the Models 802's. The Model 4025A may be plugged into either the Model 862 or another Model 4025A. Each Model 802 LINE CONNECTOR contains 12 balanced audio pairs for channels 1 through 12. 12 keying lines, 12 keying line returns and 1 audio program pair (AUX PGM IN #2).

### Functional Details of SA/IFB Feature

Normally, in a non-keyed condition, the relays connect the input female XLR-3 connectors to the output male XLR-3 connectors. When a talk circuit key of a given channel is activated, the relay disconnects the input female XLR-3 connector and connects the output male connector to that channel's talk audio from the Model 802. For example, a single IFB channel fed audio from channel 7, also, fed program audio into J9 should connect a power amplifier with speaker to J15. When the channel 7 talk button on any Model 802 is pressed, the program signal is interrupted and audio from that Model 802 will be fed to the power amplifier. When the talk button is released, the original program signal is restored.

## 1.2 SPECIFICATIONS

Color: Gray, Federal Standard 595A  
Color #26492  
Weight: 11 pounds (5 kilograms)  
Dimensions: 3.5 inches (89 millimeters) high  
19.0 inches (483 millimeters) wide  
14.4 inches (363 millimeters) deep

### Inputs

Program Input  
Level: 0 10 dBu into 600 to 2000 ohms, balanced/floating

Power, Nominal: 120/240 volts ac rms at 20 volt-amperes

### Outputs

Relay Contacts: 1 amp, 24 volts dc maximum  
0.5 amp, 110 volts ac maximum

## SECTION 2: PARTS LIST

### 2.1 Introduction

This section contains parts lists and instructions for ordering replacement parts. The parts are divided into five sections: ship list, final assembly, back panel assembly, front panel and printed circuit board. Following the description of a part number is the manufacturer and the manufacturer's part number.

### 2.2 How To Obtain Parts

RTS/Telex  
12000 Portland Avenue South,  
Burnsville, MN 55337 U.S.A.  
Telephone: (877) 863-4169  
Fax: (800) 323-0498

### 2.3 Shipping List, Model 862

<u>Qty</u>	<u>Description</u>	<u>RTS Part Number</u>
1	862 System Interconnect	9000-3062-00
1	Technical Data Package	9300-3511-00

#### 2.4 Final Assembly, Model 862 -- 9010-3062-00

<u>Qty.</u>	<u>Description</u>	<u>RTS Part Number</u>
5	Spacer, Hex 6-32 x 3/8" HH Smith 4304	1001-0012-00
1	Spacer, Hex 6-32 x 3/8" THD	1001-0081-00
20	Washer, Lock #6 Int'l Tooth, Zinc Plated	1006-0006-00
16	Screw, 6-32 x 1/4" Phil, Pan Hd, Ylw Cad	1008-6038-00
4	Screw, 8-32 x 1/2" Flat, Phil 82 Deg Blk	1008-8017-00
1	Thermal Cutout Klixon, 9700K51-11	1914-0001-00
3	Connector, Female Pin Molex 02-09-1118	2006-0006-00
4	Connector, 4 Pin Female Molex 09-50-3041	2006-0013-00
19	Connector, Pin Crimp term Molex 08-50-0108	2006-0014-00
1	Connector, 3 Pin Female Molex 09-50-3031	2006-0018-00
1	Recpt. No Mtg Ears Molex 19-09-1039	2006-0040-00
4	Connector, 14 Pin Female w/ s.r. Berg 66900-014	2007-0037-00
4	Connector, 26 Pin Female 3M 3399-6026	2008-0033-00
4	Ribbon Cable 50 Cond Spectra 8431352801050	2501-0001-00

#### 2.5 Back Panel Assembly, Model 862 -- 9020-3888-00

<u>Qty.</u>	<u>Description</u>	<u>RTS Part Number</u>
2	Standoff, 6-32 x 1 5/16" Amatom 8166-A-17-0632	1001-0139-00
26	Pop Rivet Dome Head Whitson SSD 4.2	1002-0006-00
4	Cable MTG Cradle Panduit TM1S4	1005-0046-00
4	Hex, Jack Screw, 9/16" Elec Hardware RA-47-50-7	1005-0092-00
4	Jack Socket, 3/8" Raf 4750-4	1005-0193-00
1	Washer, Lock #6 Int'l Tooth, Zinc Plated	1006-0006-00
1	Washer, Flat #6 Nylon Smith 2515	1006-0019-00
16	Nut, Hex Kep 4-40 Cad Plated	1007-0001-00
8	Screw 4-40 x 3/8" 100 de., Fl Hd, C/R, Br Wh Zinc	1008-4012-00
8	Screw, 4-40 x 1/2" Pan Hd, Phil, Yel Cad	1008-4025-00
1	Thumbscrew 6-32 x 1/2" Smith 2366	1008-6002-00
1	Screw, 6-32 x 1/4" Phil, Pan Hd, Ylw Cad	1008-6038-00
4	Connector, 50 Pin Female 3M 3565-1000	2008-0013-00
2	Connector, 25 Pin "D" Female 3M 8325-6000	2008-0040-00
1	Jack, 3 Cond Male Calrad 30-452	2013-0015-00
4	Connector, 4 Pin Female Cannon AXR 4-31	2018-0001-02
1	Power Cord 6" Grey Belden 17237	2504-0004-00
1	Strain Relief Heyco 1137	2509-1137-00
4	Cable Tie Panduit PLT2M	2516-0008-00
1	Fuse, 1/4 Amp Slo-Blo, Littlefuse 313.250	2801-0001-00
1	Fuse Carrier Schurter Fek 031.1666	2802-0002-00
1	Fuse Holder Body Schurter PCC 031.1653	2802-0003-00
	Rubber, Adhesive Back 1" x 5/16"	4501-0067-00

## 2.6 Printed Circuit Assembly, Model 862 (Upper) -- 9030-3365-00

<u>Qty.</u>	<u>Description</u>	<u>RTS Part Number</u>
7	Connector, 3 Pin Female PC MT Neutrik NC3FD-H	2018-0011-00
1	Header, 14 Pin, DL Row Str, Berg 65611-414	9020-5841-14
19	Header, 72 Pin Berg 65611-472	2007-0039-00

## 2.7 Printed Circuit Assembly, Model 862 (Lower) -- 9030-3366-00

<u>Qty.</u>	<u>Description</u>	<u>RTS Part Number</u>
6	Connector, 3 Pin Male PC MT Neutrik NC3MD-H	2018-0010-00
1	Header, 14 Pin, DL Row Str, Berg 65611-414	9020-5841-14
	Header, 72 Pin Berg 65611-472	2007-0039-00

## 2.8 Printed Circuit Assembly, Motherboard, Model 862-- 9030-3399-00

<u>Qty.</u>	<u>Description</u>	<u>RTS Part Number</u>
1	Res. CF 1 ohm 2w 5%	1402-01R0-5G
12	Res. CF 10K ohm 1/4w 5%	1402-1002-5D
12	Res. CF 1M ohm 1/4w 5%	1402-1004-5D
1	Res. CF 620 ohm 1/2w 5%	1402-6200-5E
1	Res. MF 1.5K ohm 1/4w 1%	1403-1501-2D
1	Res. MF 243 ohm 1/4w 1%	1403-2430-2D
2	Res. Ntwk 22K Sip 8 Pos Bourns 4308R-101-223	1411-2202-00
8	Cap, .01uf/1Kv C.D., Disc Radial	1501-R103-2R
14	Cap. Mono .1uf/50v .1 Spacing, 1" Length	1511-R104-2I
26	Cap, Elec 10uf/50v Axial	1513-A106-4I
12	Cap, Elec 12uf/50v AX 20% Non Polarized	1513-A126-4I
1	Cap, Elec 10uf/16v radial	1513-R106-4E
1	Cap, Elec 100uf/16v radial	1513-R107-4E
2	Cap, Elec 2200uf/35v Max - 3/4" OD x 1 1/2" H	1513-R228-4G
2	Cap, .01/5Kv Cer 1400v Murata DE7150FZ103PVA1	1524-R103-2X
8	Diode, 11DQ04 1 Amp, 40V	1601-0003-00
26	Diode, 1N4004 1 Amp, 400V	1601-4004-00
2	I.C. MC1416P Motorola Sub= 1603-0075-00	1603-0008-00
2	I.C., 74C04 National	1603-0068-00
1	Voltage Regulator, National LM317MP	1603-0317-MP
12	Relay, 12v Form Omron G2VN-234P-USDC12-OEI	1701-0008-00
1	L.E.D. Green Oshino OLG-147	1801-0147-0G
1	Switch, Slide, DPDT Switchcraft 11A-1101A	1902-0001-00
2	I.C. Socket, 14 Pin Burndy DIL14P-108	2001-0002-00
2	I.C. Socket, 16 Pin Burndy DIL16P-108	2001-0003-00
1	Connector, 3 Pin Wafer Molex 26-51-0032	2006-0002-00
4	Connector, 4 Pin Wafer Molex 09-65-1041	2006-0012-00
1	Connector, 3 Pin Molex 15-31-1036	2006-0038-00



## 2.8 Printed Circuit Assembly, 862 Motherboard -- 9030-3399-00 (continued)

<u>Qty.</u>	<u>Description</u>	<u>RTS Part Number</u>
1	Transformer EWC LP-20-600-B8	2301-0006-00
25	Transformer, Audio Bourns LM9003	2306-0001-00
	Wire, 20 Awg Buss	2512-0020-00
1	Fuse, 1 Amp Slo-Blo, Littlefuse 313001	2801-0007-00
2	Fuse Clip P.C. Littlefuse 102071	2802-0005-00
2	Header, 14 Pin, DL Row Str, berg 65611-414	9020-5841-14
	Header, 72 Pin Berg 65611-472	2007-0039-00
4	Header, 26 Pin, DL, Row Str, Berg 65611-426	9020-5841-26
	Header, 72 Pin Berg 65611-472	2007-0039-00

## 2.9 Front Panel, Model 862 -- 9070-3145-00

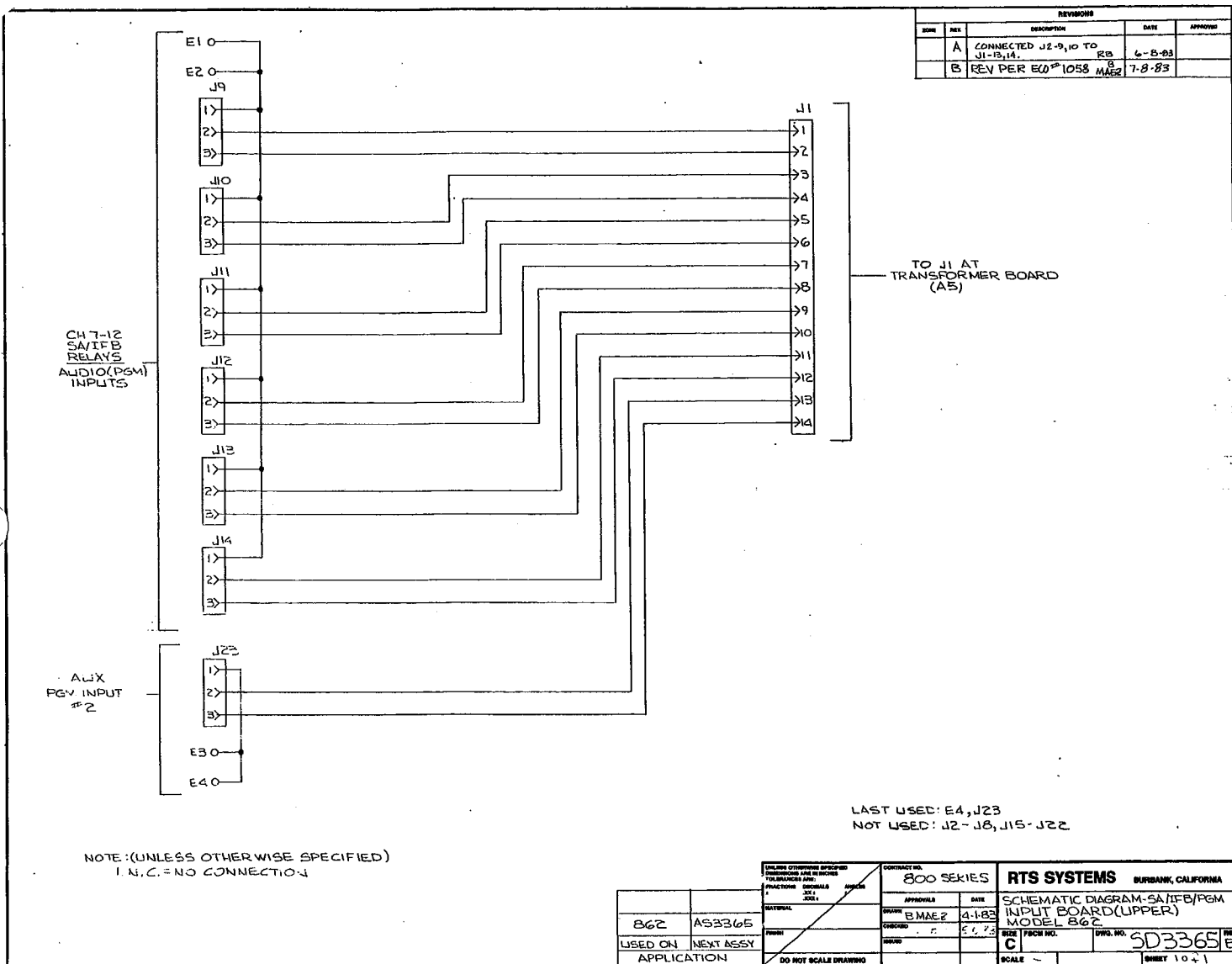
<u>Qty.</u>	<u>Description</u>	<u>RTS Part Number</u>
19	Extrusion, Front panel w/Groove 11.25" x 3 1/2"	9050-1629-00
2	Side rail, FAB Per Dwg 1835-4	9100-1835-04
28	Extrusion, Side Panel 10" x 3 1/2"	9050-1586-00
1	Cover, Top Model 862, FAB Per Dwg 3144-1	9100-3144-01
1	Cover, Bottom Model 862, FAB Per Dwg 3144-2	9100-3144-02

### SECTION 3: LIST OF DRAWINGS

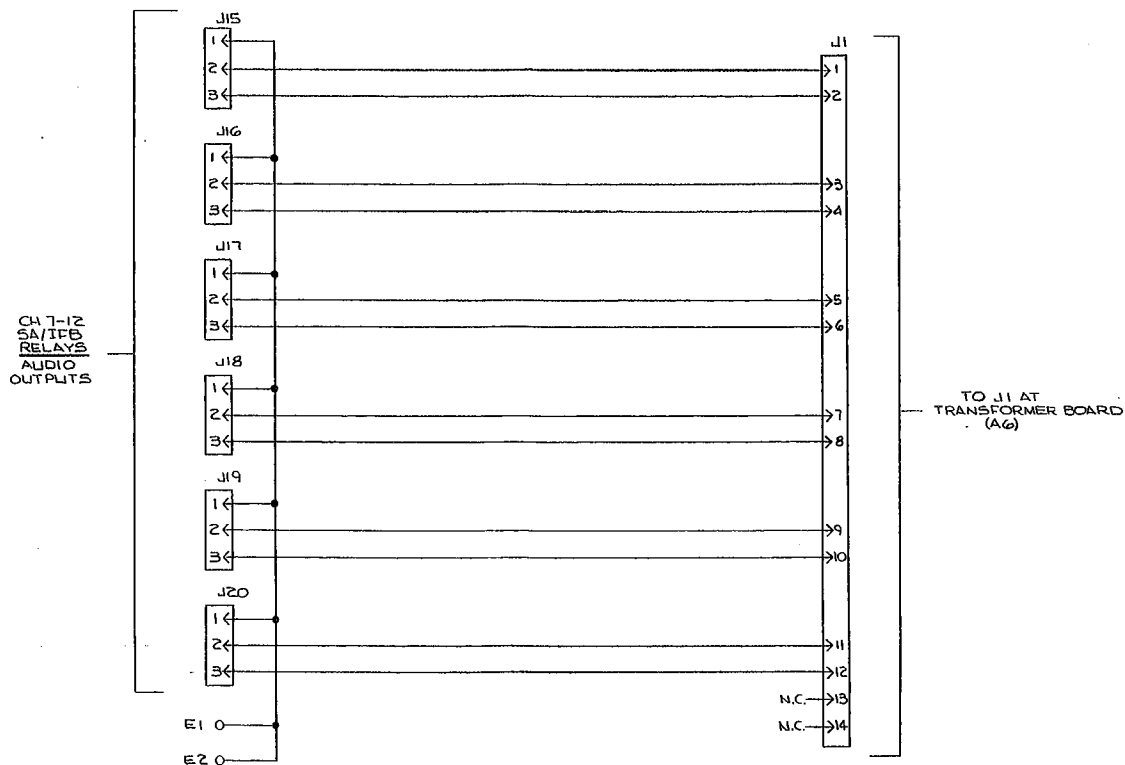
#### RTS Systems

#### Document

<u>Number</u>	<u>Title</u>	<u>Page</u>
SD3365	Schematic Diagram, SA/IFB/PGM, Input Board (Upper) Model 862 .....	11
SD3366	Schematic Diagram, SA/IFB Output Board (Lower), Model 862 .....	12
AS3062	Assembly Diagram, P.C. Board, SA/IFB/PGM Inputs (Upper) Board - Model 862.....	13
AS3366	Assembly Diagram, P.C. Board, SA/IFB Outputs (Lower) Board - Model 862.....	14
SD3399	Schematic Diagram, Model 862, sheet 1 through 3 .....	15-17
AS3399	Assembly Drawing, P.C.B. Board, System Interconnect, Model 862 .....	18
AS3062	Assembly Drawing, Top Assy, System Interconnect, Model 862.....	19



REVISIONS				
ZONE	REV.	DESCRIPTION	DATE	APPROVED



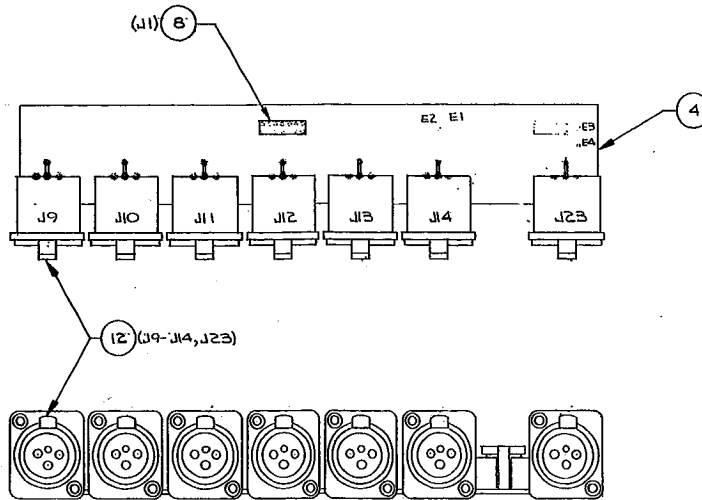
NOTE: (UNLESS OTHERWISE SPECIFIED.)

LAST USED: E2, J20  
NOT USED: J2-J14

UNLESS OTHERWISE SPECIFIED DIMENSIONS ARE IN INCHES FRACTIONS ARE DECIMALS INCHES		CONTRACT NO. 800 SERIES		RTS SYSTEMS BURNBANK, CALIFORNIA	
862	AS3366	APPROVALS	DATE	SCHEMATIC DIAGRAM- SA/IFB OUTPUT BD. (LOWER)	
USED ON	NEXT ASSY	DESIGNED BY	4-4-83	MODEL 862	
APPLICATION		CHECKED BY	5-6-83	SIZE	DWG. NO. SD3366
DO NOT SCALE DRAWING		ISSUED BY		SCALE	SHEET 1 of 1

COPYRIGHT 1983 by RTS SYSTEMS, INC. All rights reserved. These plans and/or drawings may not be copied or transmitted to others without the written consent of RTS SYSTEMS, INC., 1100 West Chestnut Street, Burbank, CA 91506, U.S.A., which owns all related proprietary rights.

A DELETED C1,C2,T1,J2, RB 6-8-83



FOR SEPARATE LIST OF PARTS SEE PL3365

AS3062	862
NEXT ASSY	USED ON
APPLICATION	

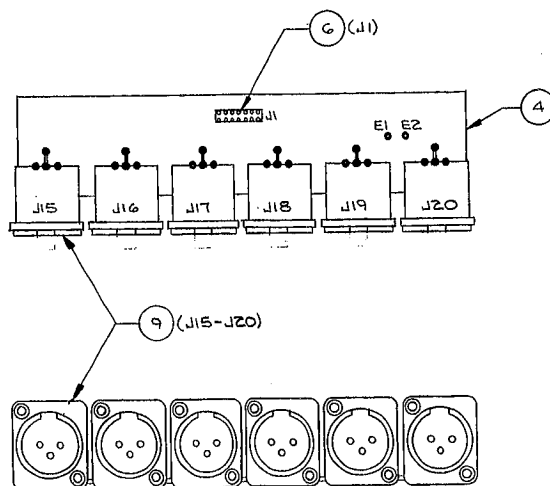
800 SERIES

RC.BD ASSY-SA/IFB/PGM INPUTS  
B.MAE2 5-10-83 (UPPER)BD.-MODEL 862  
L. B. 5-18-83

AS3365 A  
1081

COPYRIGHT 1983 by RTS SYSTEMS, INC. All rights reserved. These  
 plans and/or drawings may not be copied, or transmitted to others,  
 without the written consent of RTS SYSTEMS, INC., 1100 West Coastway  
 Drive, Burbank, CA 91506, U.S.A., which owns all related proprietary  
 rights.

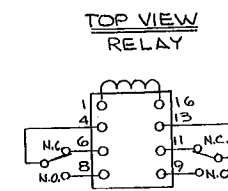
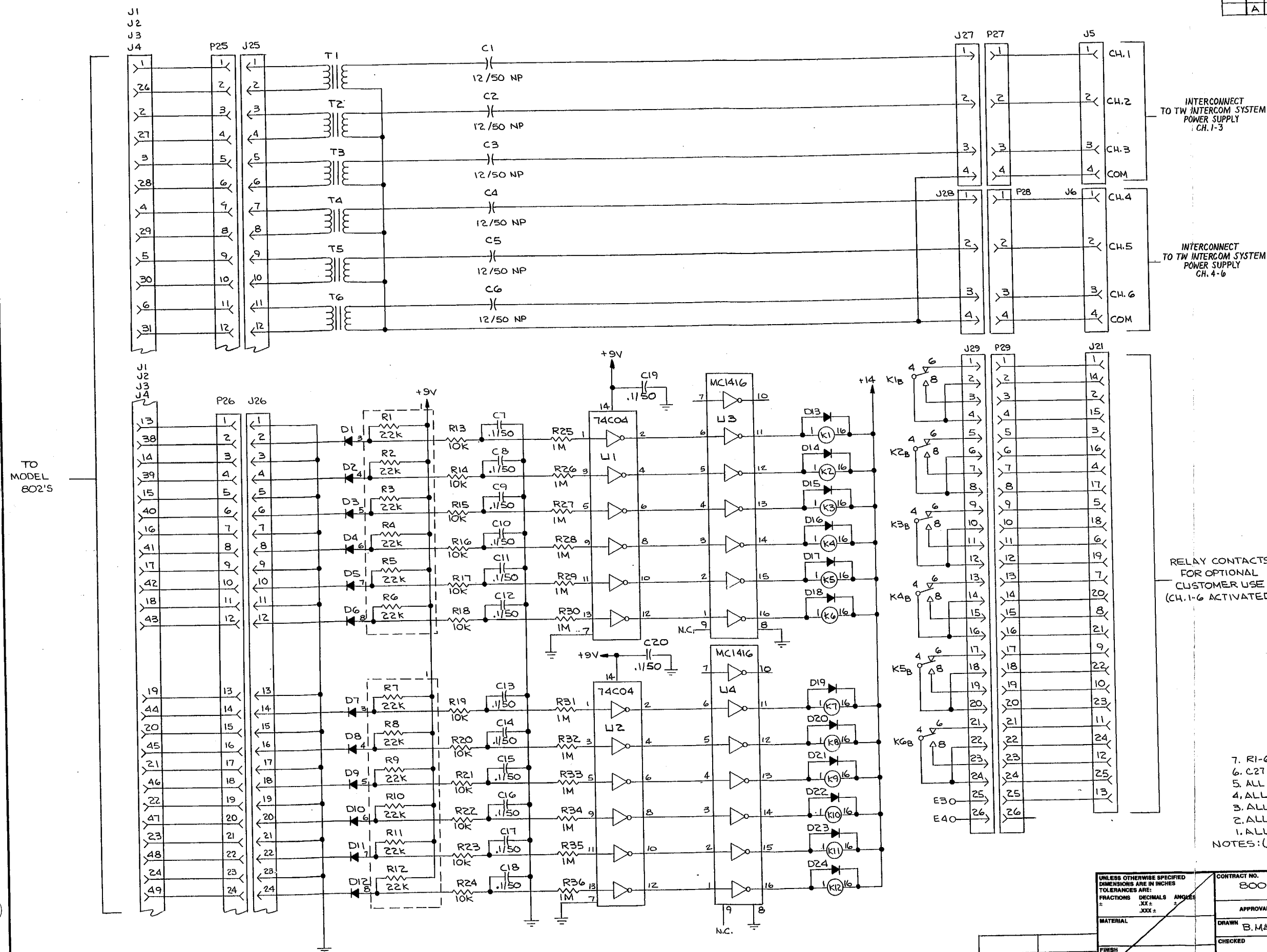
REVISIONS				
ROW	REV	DESCRIPTION	DATE	APPROVED



FOR SEPARATE LIST OF PARTS SEE PL3366

UNLESS OTHERWISE SPECIFIED DIMENSIONS ARE IN INCHES TOLERANCES ARE:		CONTRACT NO. <b>800 SERIES</b>		<b>RTS SYSTEMS</b> BURBANK, CALIFORNIA	
MATERIAL <b>SEE PL3366</b>	DATE <b>5-18-83</b>	APPROVALS <b>B.M.A.E.2</b>	DATE <b>5-18-83</b>	PC.BD.ASSY-SA/IFB OUTPUTS (LOWER) BD.-MODEL 862	
NEXT ASSY USED ON <b>APPLICATION</b>	DO NOT SCALE DRAWING	CHECKED <b>L.B.</b>	DATE <b>5-18-83</b>	SIZE / P3CM NO <b>C</b>	DWG. NO <b>A33366</b>
		SCALE 1:1		SHEET 1 of 1	

REVISIONS				
ZONE	REV.	DESCRIPTION	DATE	APPROVED
	A	REVISED PER ECD 1067	7-15-83	



RELAY CONTACTS FOR OPTIONAL CUSTOMER USE (CH. 1-6 ACTIVATED)

7. R1-6 & R7-12 ARE 22K RESISTOR NETWORKS.  
 6. C27-C50 ARE 10/50.  
 5. ALL TRANSFORMERS ARE BOURNS LM9003.  
 4. ALL CAPACITANCE VALUES ARE IN MICROFARADS/VOLTS.  
 3. ALL RESISTANCE VALUES ARE IN OHMS,  $\pm 5\%$ , CARB. FILM.  
 2. ALL RELAYS ARE OMRON G2V-2-34P-DC12.  
 1. ALL DIODES ARE IN4004  
 NOTES: (UNLESS OTHERWISE SPECIFIED)

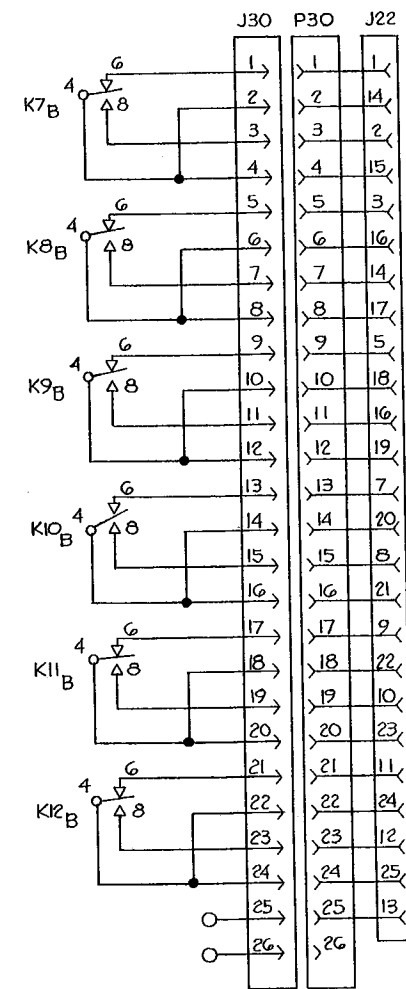
LAST USED: C65, D34, D51, E4, J36, K12, R39, U5  
 NOT USED:

UNLESS OTHERWISE SPECIFIED DIMENSIONS ARE IN INCHES TOLERANCES ARE: FRACTIONS DECIMALS ANGLES ± .010 ± .005 ± .010		CONTRACT NO. 800 SERIES		RTS SYSTEMS BURBANK, CALIFORNIA	
APPROVALS		DATE		SCHEMATIC DIAGRAM, MODEL 862	
DRAWN B. MAEZ		5-26-83		SIZE FSCM NO. DWG. NO. REV.	
CHECKED				D 60572 SD3399 A	
ISSUED				SCALE SHEET 1 OF 3	
AS3399 862 NEXT ASSY USED ON APPLICATION		DO NOT SCALE DRAWING			





RELAY CONTACTS  
FOR OPTIONAL  
CUSTOMER USE  
(CH. 7-12 ACTIVATED)

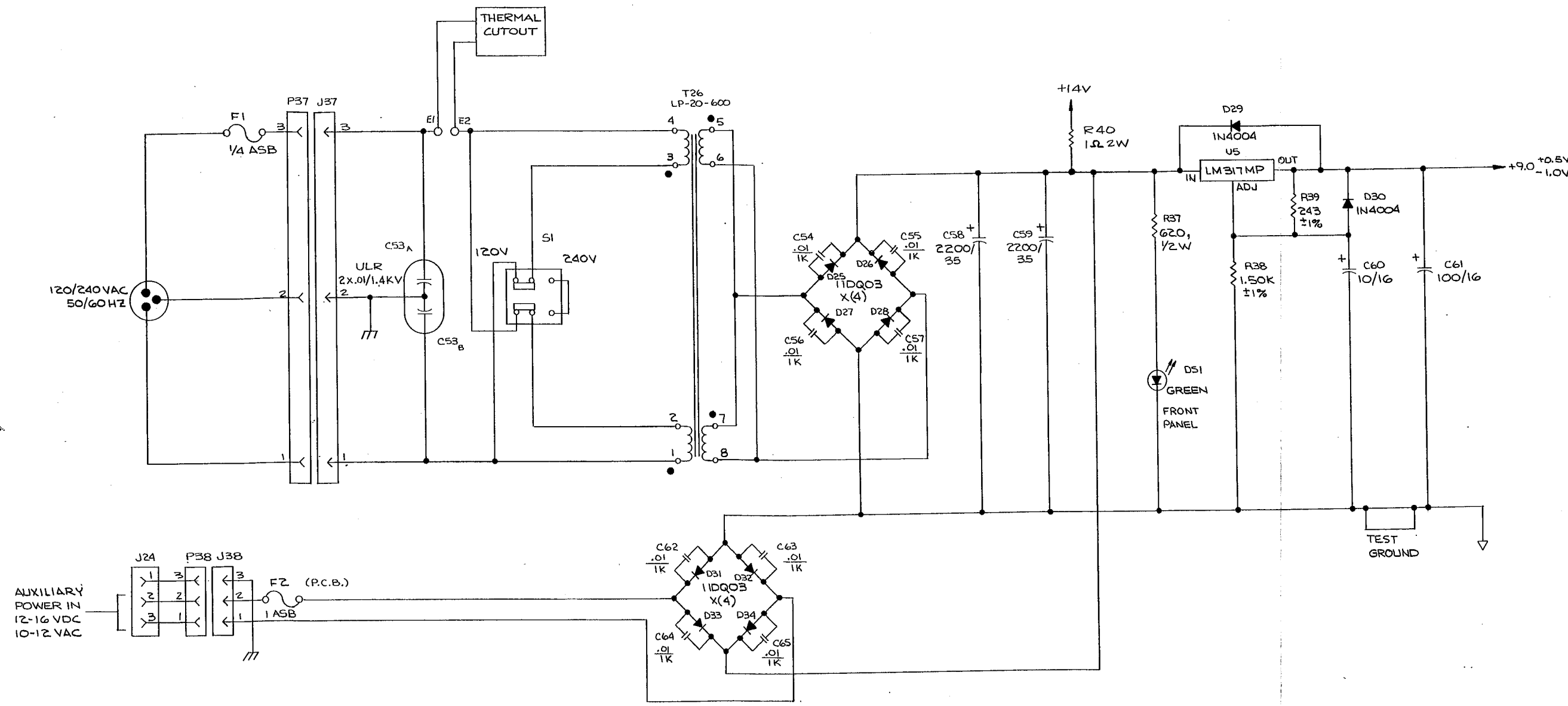


RELAY CONTACTS  
FOR OPTIONAL  
CUSTOMER USE  
(CH. 7-12 ACTIVATED)

Page 16



REVISIONS			
ZONE	REV.	DESCRIPTION	DATE
		SEE SHEET ONE	

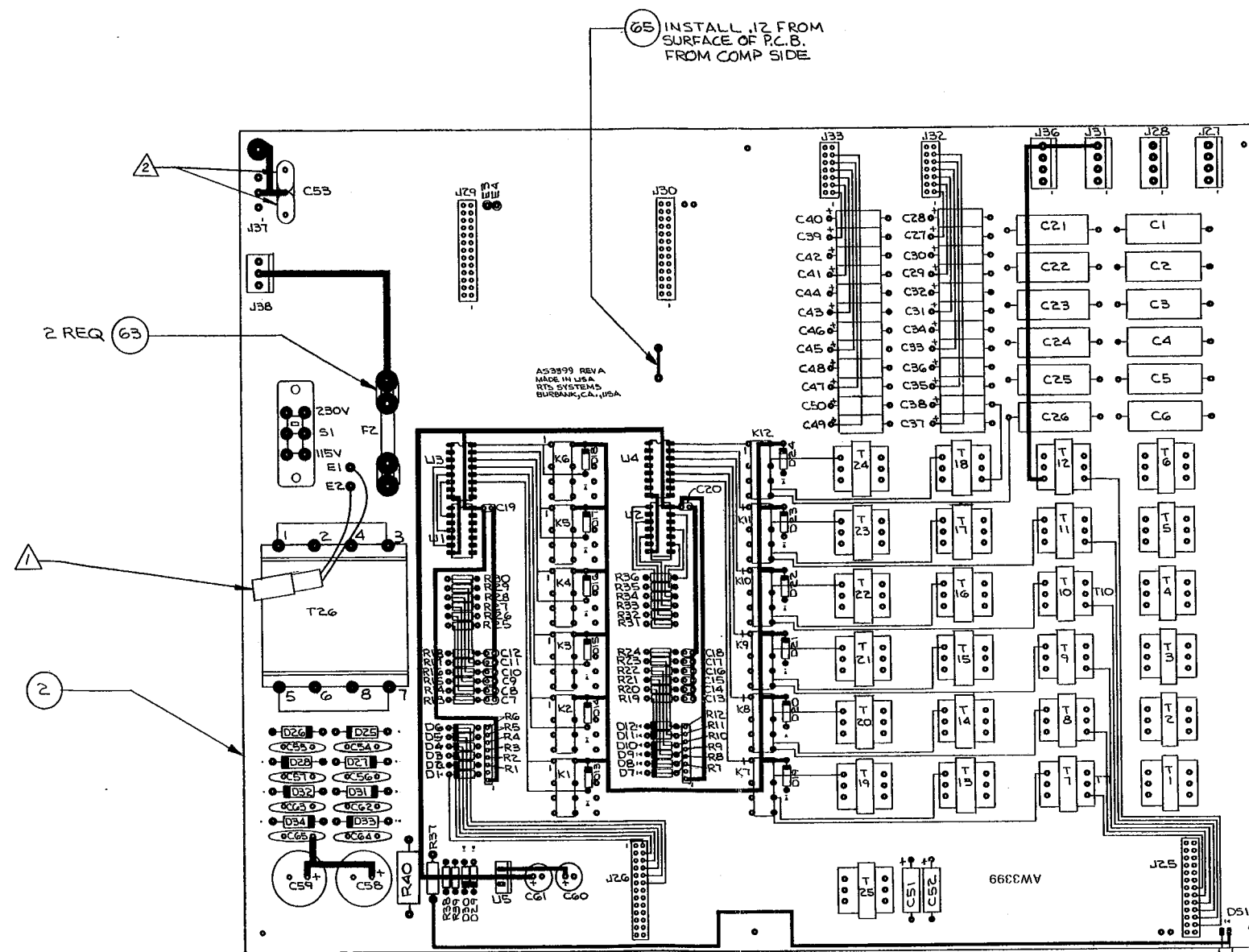


LAST USED:  
NOT USED:

UNLESS OTHERWISE SPECIFIED DIMENSIONS ARE IN INCHES TOLERANCES ARE: FRACTIONS DECIMALS ANGLES ± .XX ± .XXX ±		CONTRACT NO. 800 SERIES		RTS SYSTEMS BURBANK, CALIFORNIA	
APPROVALS		DATE		SCHEMATIC DIAGRAM, MODEL 862	
DRAWN B.MAE2		526-83		SIZE D	
CHECKED				DWG. NO. SD3399	
ISSUED				REV. A	
DO NOT SCALE DRAWING		SCALE		SHEET 3 of 3	



REV	DESCRIPTION	DATE	APPROVED
A	ADDED NOTE 1 ON F/D	8-21-84	GM
B	REVISED PER ECO 1560	12-5-85	GM
C	REVISED PER ECO 2592	8-17-89	RTL



# NOTES: (UNLESS OTHERWISE SPECIFIED)

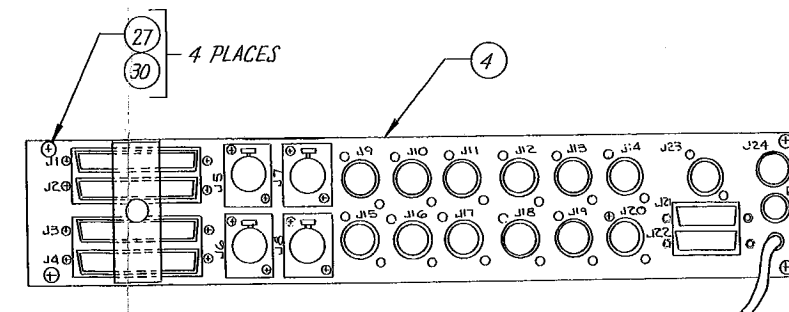
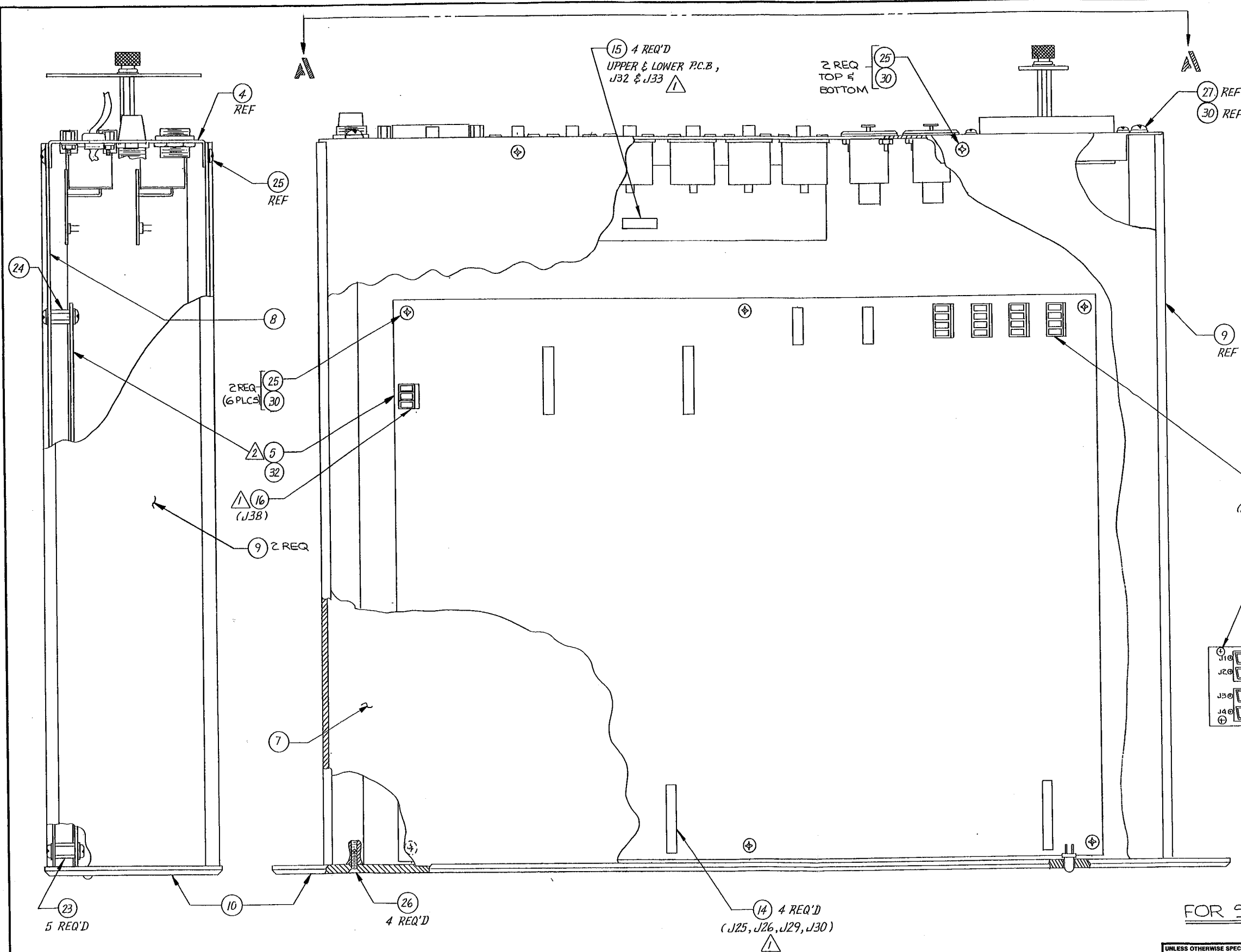
- 1 SOLDER ITEM 32 OF PARTS LIST # 9010-3062-00 AT LOCATION SHOWN. USE THERMAL BOND, P/N 4002-0251-00 TO GLUE ITEM 32 ONTO TRANSFORMER (T26). SEE NOTE 2 OF DWG AS 3062. NOT TO BE INSTALLED AT THIS LEVEL.
- 2 INSTALL TWO (.01μF/2KV) CAPS IN PLACE OF DUAL CAP (C53). CAPS SHARE THE MIDDLE PAD.

FOR SEPARATE PARTS LIST SEE PL3399

UNLESS OTHERWISE SPECIFIED DIMENSIONS ARE IN INCHES FRACTIONS DECIMALS ANGLES XXX		CONTRACT NO. 800 SERIES		RTS SYSTEMS BURBANK, CALIFORNIA	
MATERIAL SEE PL3399		APPROVALS	DATE	P.C.BD ASSY- SYSTEM INTERCONNECT-MODEL 862	
FINISH		DRAWN B.MAEZ	7-14-83	CHECKED	
NEXT ASSY USED ON APPLICATION		ISSUED		SIZE D	FSCM NO. L00572
DO NOT SCALE DRAWING		SCALE 1/1		DWG. NO. AS3399	REV. C
		SHEET 1041			



REVISIONS				
ZONE	REV.	DESCRIPTION	DATE	APPROVED
B	REVISED & REDRAWN	B.MAEZ	6-17-83	
C	REVISED PER ECO 1051	MV	7-12-83	
D	REVISED PER ECO 1264	GM	7-3-84	
E	ADDED NOTE 2 & ITEM 32 ON F/D GM		8-21-84	



VIEW A-A (BACK PANEL)  
SCALE: 1/2

FOR SEPARATE PARTS LIST SEE # PL3062

INSTALL ITEM 32 ON P.C.B. (ITEM 5). SEE NOTE 1 OF DWG AS3399 FOR PROPER LOCATION OF ITEM 32

USE IN CONJUNCTION WITH DWG'S WD 3414 & WD 3379

NOTES:

UNLESS OTHERWISE SPECIFIED DIMENSIONS ARE IN INCHES TOLERANCES ARE: FRACTIONS DECIMALS ANGLES ± .XXX ±		CONTRACT NO. 800 SERIES		RTS SYSTEMS BURBANK, CALIFORNIA	
APPROVALS		DATE		TOP ASSEMBLY- SYSTEM INTERCONNECT- MODEL 862	
DRAWN B.MAEZ		6-17-83		SIZE FSCM NO. DWG. NO. AS3062	
CHECKED				REV. E	
ISSUED				SCALE 1:1 SHEET 1 of 1	
DO NOT SCALE DRAWING					







