

## VLink/VLink LE Virtual Intercom System

<p><b>System Requirements</b></p> <p><b>Important:</b> When you start the VLink Virtual Matrix software for the first time, you must obtain the System Identification of the computer you are running the software. The System Identification number is needed to license the software.</p>	<p><b>NOTE:</b> If you are using multiple NIC (Network Interface Card) cards, be sure you are using the configured card.</p> <p><b>Hardware</b></p> <ul style="list-style-type: none"> <li>Pentium 4, 2.4GHz or better with 4GB memory (requirements may be greater depending on system size)</li> </ul> <p><b>Software</b></p> <ul style="list-style-type: none"> <li>Windows Server 2008 (preferred), Windows Server 2003, Windows XP, Windows Vista, or Windows 7</li> </ul> <p><b>Network</b></p> <ul style="list-style-type: none"> <li>100BaseT connection</li> <li>For more information, see the Network Bandwidth Requirements Guide on page 65 in the System Administration Guide (PN-F01U217816)</li> </ul> <p><b>Firewall</b></p> <ul style="list-style-type: none"> <li>Outbound: Allow TCP connection for data on port 1000 and UDP connection for audio on port 1000</li> <li>Inbound: Port forwarding TCP and UDP on port 1000 to IP Address server</li> </ul>
<p><b>Installation</b></p> <p><b>Important:</b> The VLink Virtual Matrix can be run before licensing; however, you cannot connect to the control panel or device interfaces.</p>	<p>To install the VLink Virtual Matrix software, do the following:</p> <ol style="list-style-type: none"> <li>Double-click <b>VLink_Virtual_Matrix_Setup.exe</b>. <i>The installation wizard begins.</i></li> </ol> <div data-bbox="678 1129 1372 1690" data-label="Diagram"> </div> <ol style="list-style-type: none"> <li>Accept all the <b>defaults</b>.</li> </ol> <p><b>NOTE:</b> You must accept the end user license agreement to finish the installation.</p> <ol style="list-style-type: none"> <li>Click <b>Finish</b>. <i>The VLink Matrix software is installed.</i></li> </ol>

### Obtain the System Identification Code

There are two (2) ways to obtain the System Identification Code

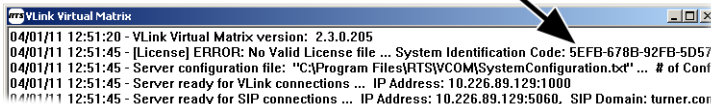
- From the Virtual Matrix first time logon window
- From the System Identification Code window in the System Administration application.

To obtain the system identification code from the virtual matrix window, do the following:

4. From the Windows Start menu, select **Programs|RTS|VLink Virtual Matrix**.

*The VLink Virtual Matrix application starts.*

#### System Identification Code



5. Record the **System Identification Code** to submit for the license code.

To obtain the system identification code from the System Administration window, do the following:

**Important:** System Status fields are color-coded as follows:

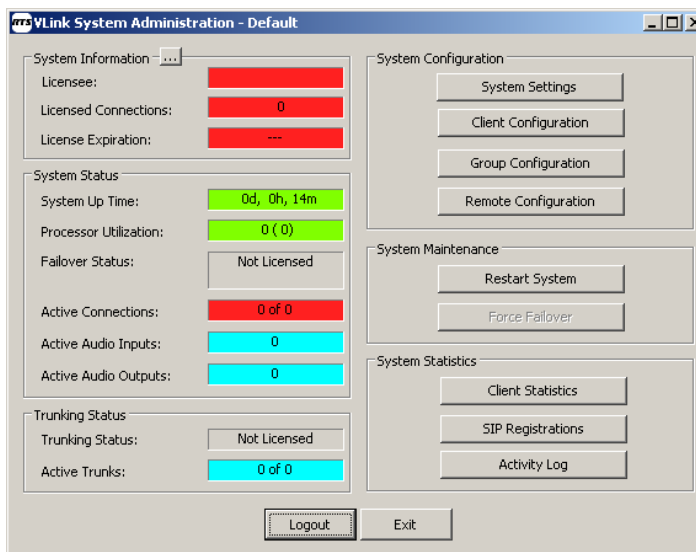
- Red indicates a problem
- Yellow indicates a condition needs attention
- Green indicates normal operation

1. From the Start menu, select **Programs|RTS|VLink System Administration**.

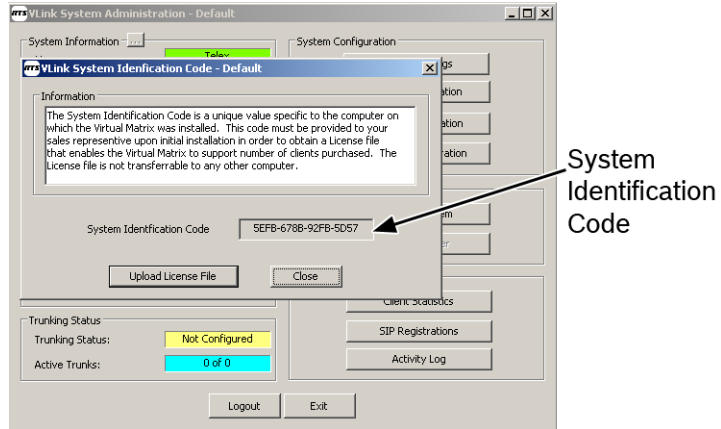
*The System Administration Login window appears.*

2. Click **Login**.

*The System Administration window appears.*



3. Click the **System Information** button located in the upper-left corner. *The System Identification Code window appears.*



4. Record the **System Identification Code** to submit for the license code.

### Obtain Valid License Code

**Important:** When you receive your license code, save it to your desktop for later use.

To **obtain a valid license code**, do the following:

- > Using the licensing contact person information below, send an email to the appropriate contact requesting a license code.

Asia (APR Region)	alice.onn@sg.bosch.com	Alice Onn
Europe, Africa, Middle East (AMEA Region)	NSOOrderDeskExport.STSEC-LOG@de.bosch.com	Susi Betzenhauser Sabina Basic
Americas (AMEC Region)	buv.orders@us.bosch.com	Lisa Wenger Diane Dressel

### Activate VLink

To activate the VLink software application, do the following:

**Important:** System Status fields are color-coded as follows:

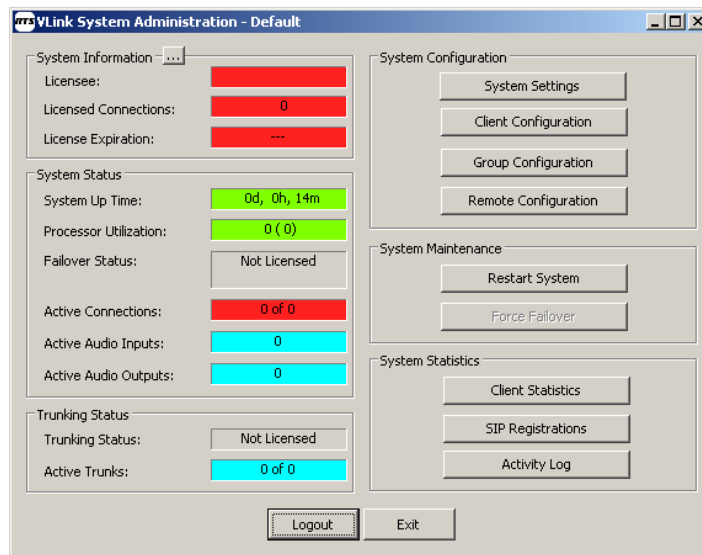
- Red indicates a problem
- Yellow indicates a condition needs attention
- Green indicates normal operation

1. From the Start menu, select **Programs|RTS|VLink System Administration**.

*The System Administration Login window appears.*

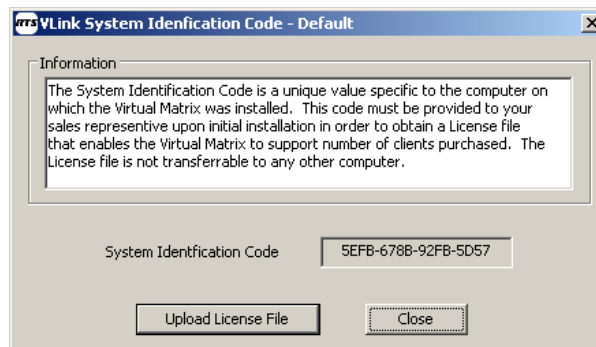
2. Click **Login**.

*The System Administration window appears.*



3. Click the **System Information** button located in the upper-left corner.

*The System Identification Code window appears.*



4. Click **Upload License File**.

*A navigational window appears.*

5. Navigate to where you saved the **VirtualMatrix.key** file.

6. Click **Open**.

*The license code is uploaded into the application.*

**Reference:** For more detailed information, see the VLink System Administrator's Guide (PN - F01U217816) or the VLink User's Manual (PN - F01U2178150).